

"PEANUTpolyline.txt"

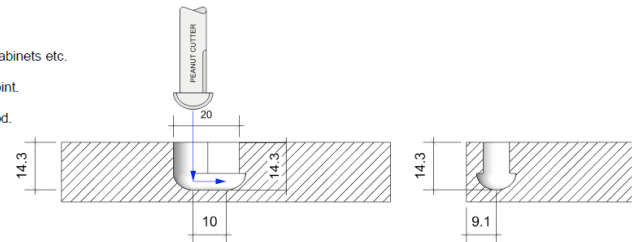
\$10 'Compact

10 'Length

14.3 'Overall Depth

Option 1 (Compact)

- ° Ideal for smaller panels, drawer boxes, shallow cabinets etc.
- ° Panels must be abutted fully before closing the joint.
- ° Perfect for particle board, MDF, ply and solid wood.



MACHINING TOLERANCE + 0.3mm - 0.4mm (DEPTH)

\$20 'Standard Fit

13.4 'First Depth

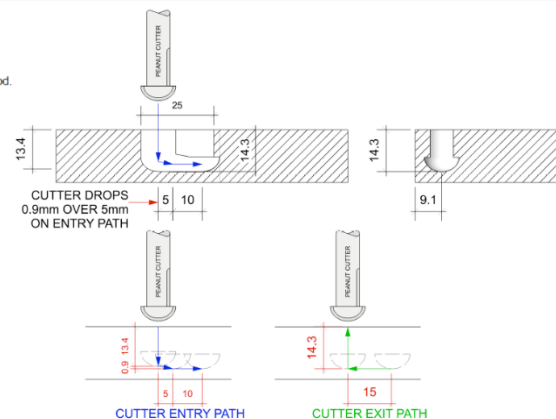
5 'First Length

10 'Next Length

14.3 'Overall Depth

Option 2 (Standard Fit)

- ° Ideal for larger panels, kitchen cabinets etc.
- ° Perfect for particle board, MDF, ply and solid wood.



MACHINING TOLERANCE + 0.3mm - 0.4mm (DEPTH)

\$30 'Easy Fit

12.2 'First Depth

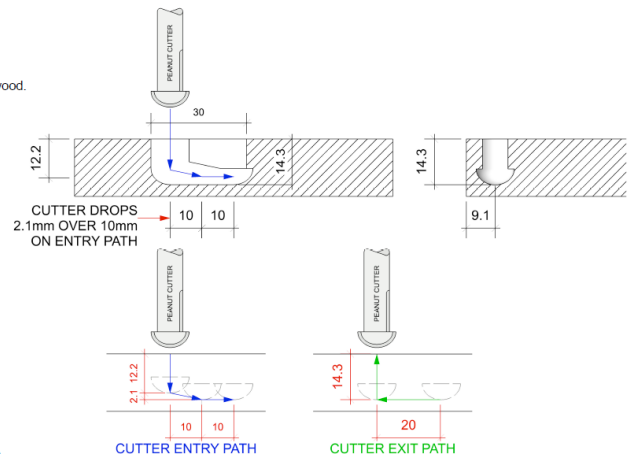
10 'First Length

10 'Next Length

14.3 'Overall Depth

Option 3 (Easy Fit)

- ° Ideal for larger panels, wardrobes etc.
- ° Perfect for particle board, MDF, ply and solid wood.
- ° Easier for less experienced assemblers.



MACHINING TOLERANCE + 0.3mm - 0.4mm (DEPTH)